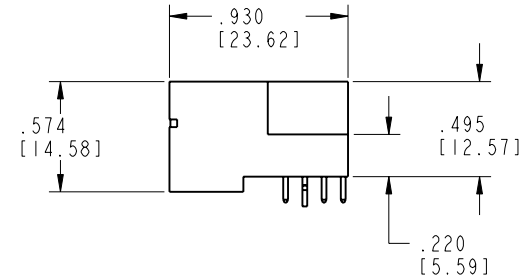
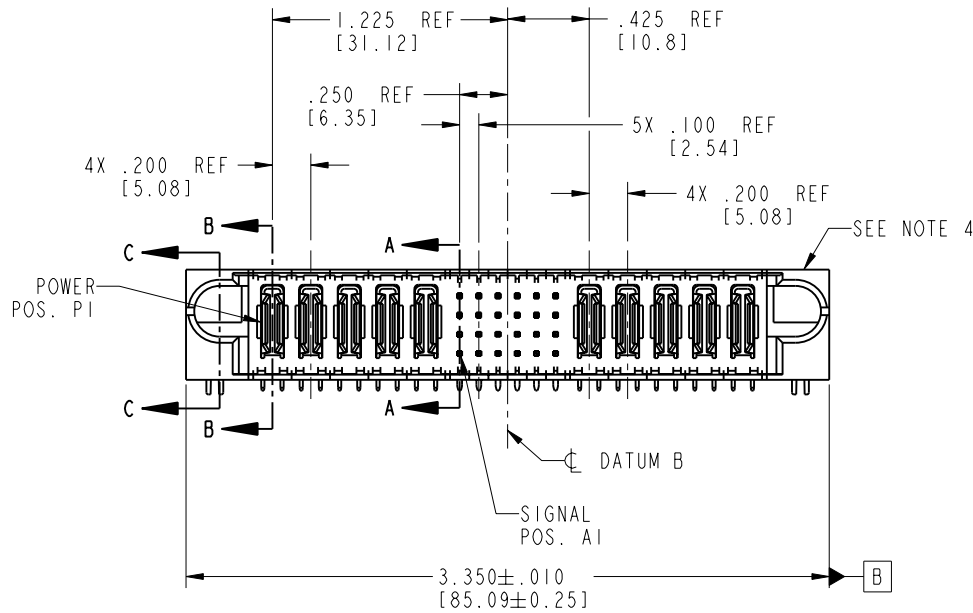
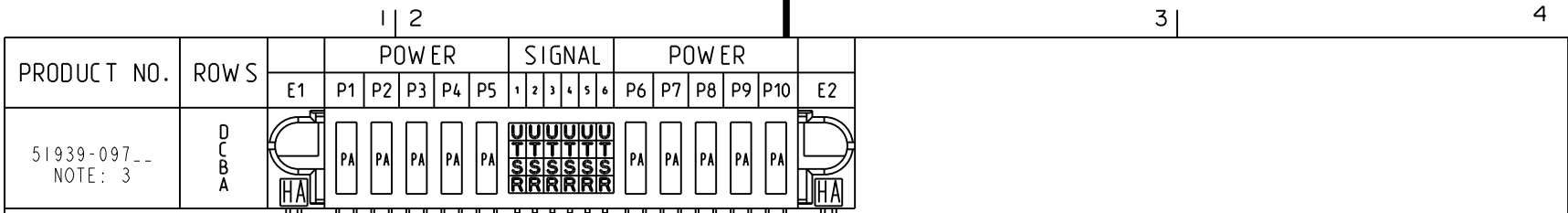


Tous droits strictement réservés. Reproduction ou communication ou des liens interdite sous quelque forme que ce soit sans autorisation écrite du propriétaire. Propriété de c FCI. Droits de reproduction FCI.

All rights strictly reserved. Reproduction or issue to third parties in any form whenever is not permitted without written authority from the proprietor. Property of FCI. Copyright FCI.



CODE	DIM "M" MATING LENGTH	CONTACT TYPE
R	.270 [6.86]	SIGNAL
S	.270 [6.86]	SIGNAL
T	.270 [6.86]	SIGNAL
U	.270 [6.86]	SIGNAL
PA	N/A [N/A]	POWER
HA	N/A [N/A]	HOLD-DOWN

mat'l code SEE NOTE 2				tolerances unless otherwise specified		CUSTOMER		 www.fciconnect.com	
ltr	ecn no.	dr	date	linear	.XX ± .01/0.X ± 0.3	COPY		 INCH/MM	title
A	V03-1267	TAB	12/01/03		.XXX ± .005/0.XXX ± 0.13	projection			5P + 24S + 5P
B	DG06-0014	JMG	01/16/06	angles	.XXX ± .0020/0.XXX ± 0.051	 INCH/MM		RIGHT ANGLE SOLDER HEADER	
				dr	T. BRUNGARD	12/01/03	product family		PwrBlade
				engr	M. GRAY	12/01/03	code		213
				chr	M. GRAY	12/01/03	size		dwg no
				appd	M. GRAY	12/01/03	scale		1:1
sheet index		revision sheet		B	B	B	B	A	
		1 2		3	4			51939-097	
								sheet 1 of 4	

Pro/E

cage code 22526

PDM: Rev:B

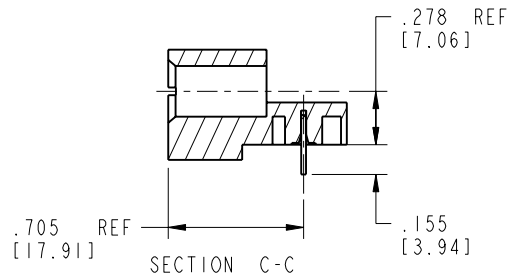
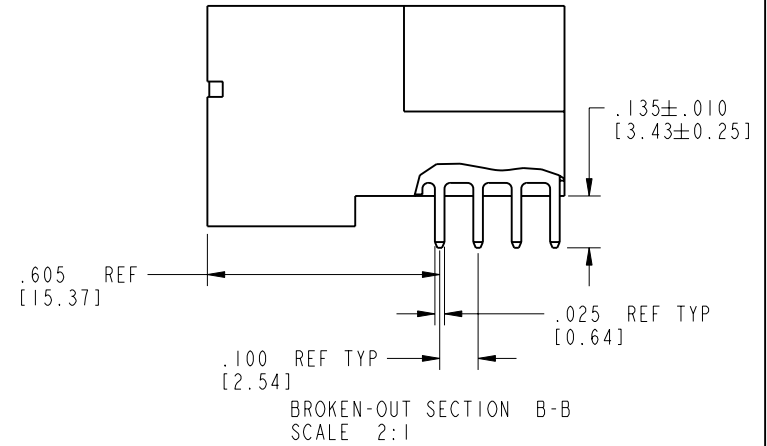
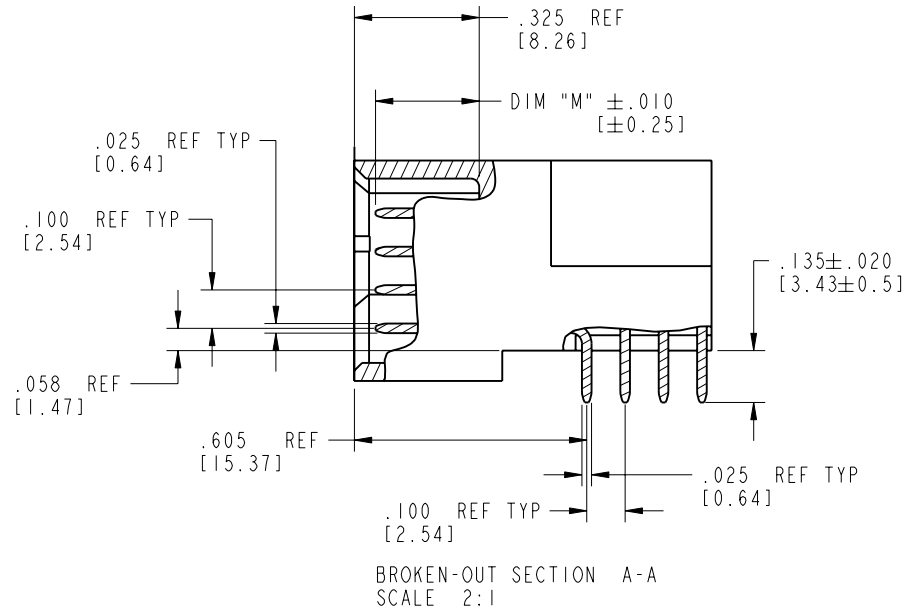
STATUS: Released


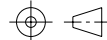
Printed: Aug 14, 2007

Tous droits strictement réservés. Reproduction ou communication o des liers interdite sous quelque forme que ce soit sans autorisation écrite du propriétaire. Propriété de c FCI. Droits de reproduction FCI.

All rights strictly reserved. Reproduction or issue to third parties in any form, whatever is not permitted without written authority from the proprietor. Property of FCI. Copyright FCI.

PRODUCT NUMBER
51939-097__
NOTE: 3



mat'l code		SEE NOTE 2		tolerances unless otherwise specified		CUSTOMER		 FCI www.fciconnect.com			
lfr	ecn no.	dr	date	linear	.XX±.01/0.X±0.3	COPY					
B				linear	.XXX±.005/0.XX±0.13	projection			title	5P + 24S + 5P	
				angles	.XXX±.0020/0.XXX±0.051	INCH/MM			product family	PwrBlade	code
				dr	T. BRUNGARD 12/01/03	scale		size	dwg no	sheet	2 of 4
				engr	M. GRAY 12/01/03	1:1		A	51939-097		
				chr	M. GRAY 12/01/03						
				appd	M. GRAY 12/01/03						
sheet index	revision sheet										

cage code 22526

Pro/E

PDM: Rev:B

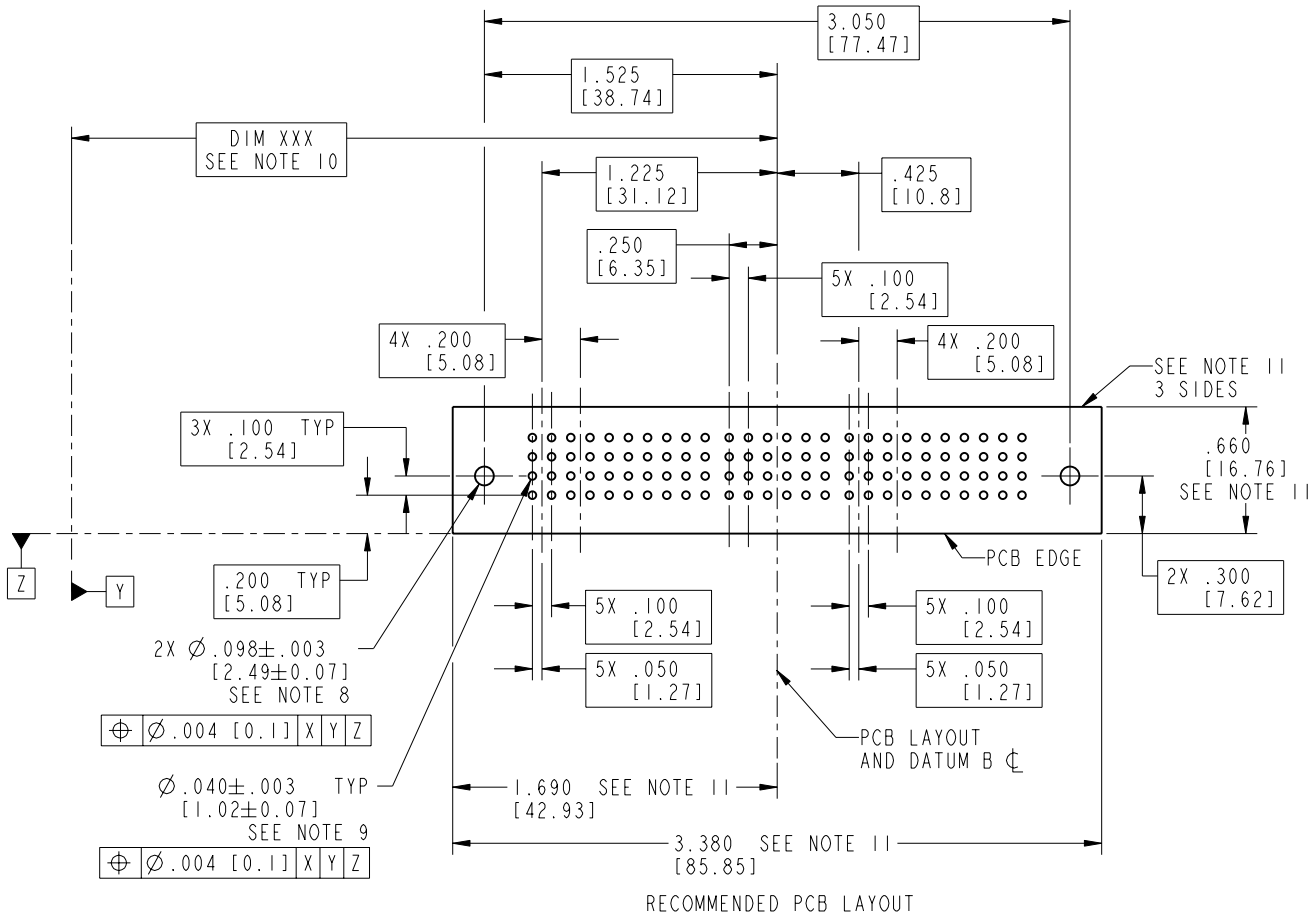
STATUS: Released

Printed: Aug 14, 2007

Tous droits strictement réservés. Reproduction ou communication o des liers interdite sous quelque forme que ce soit sans autorisation écrite du propriétaire. Propriete de c FCI. Droits de reproduction FCI.

All rights strictly reserved. Reproduction or issue to third parties in any form, whenever is not permitted without written authority from the proprietor. Property of FCI. Copyright FCI.

PRODUCT NUMBER
51939-097__
NOTE: 3



mat'l code		SEE NOTE 2		tolerances unless otherwise specified		CUSTOMER		 www.fciconnect.com	
lfr	ecn no.	dr	date	linear	.XX ± .01/0.X ± 0.3	COPY		title	5P + 24S + 5P
B				angles	.XXX ± .005/0.XX ± 0.13	projection		RIGHT ANGLE SOLDER HEADER	
				dr	.XXX ± .002/0.XX ± 0.051	INCH/MM		product family	PwrBlade
				engr	T. BRUNGARD 12/01/03	scale		code	213
				chr	M. GRAY 12/01/03	1:1		size	dwg no
				appd	M. GRAY 12/01/03			A	51939-097
sheet index	revision sheet							sheet	3 of 4

cage code 22526

Pro/E

PDM: Rev:B

STATUS: Released

Printed: Aug 14, 2007

Tous droits strictement reserves. Reproduction ou communication o des liers interdite sous quelque forme que ce soit sans autorisation ecrite du proprietaire. Propriete de c FCI. Droits de reproduction FCI.



All rights strictly reserved. Reproduction or issue to third parties in any form, whatever is not permitted without written authority from the proprietor. Property of FCI. Copyright FCI.

PRODUCT NUMBER
51939-097__
NOTE: 3

NOTES:

1. DIMENSIONS AND TOLERANCES ARE IN ACCORDANCE WITH ASME Y14.5M, 1994 UNLESS OTHERWISE SPECIFIED.

CONNECTOR NOTES:

- 2. HOUSING MATERIAL: UL 94 V-0 GLASS FILLED
HIGH-TEMP THERMOPLASTIC
POWER CONTACT MATERIAL: COPPER ALLOY
SIGNAL PIN MATERIAL: COPPER ALLOY
- 3. 51939-097;51939-097LF;51939-097GLF PLATING SPEC. SEE PRINT:10064183
- 4. MANUFACTURER'S NAME, P/N, AND DATE CODE TO APPEAR ON THIS SURFACE.
- 5. PRODUCT SPECIFICATION GS-12-149.
APPLICATION SPECIFICATION BUS-20-067.
- 6. PACKAGED IN TRAYS.
PCB NOTES:
- 7. ALL HOLE DIAMETERS ARE FINISHED HOLE SIZE.
- 8. MOUNTING HOLES, WHERE APPLICABLE, ARE UNPLATED.
- 9. $\varnothing .0453 \pm .0010$ [1.151 \pm 0.025] DRILLED HOLES PLATED WITH .0003 [0.008] MIN SnPb OVER .001 [0.03] TO .003 [0.08] Cu PLATING TO ACHIEVE $\varnothing .040 \pm .003$ [1.02 \pm .07] HOLE.
- 10. "DIM XXX" TO BE DETERMINED BY THE CUSTOMER.
- 11. CONNECTOR KEEP-OUT ZONE.

mat'l code		SEE NOTE 2		tolerances unless otherwise specified		CUSTOMER		www.fciconnect.com	
lfr	ecr no.	dr	date	linear	.XX \pm .01/0.X \pm 0.3	COPY			
B				projection	.XXX \pm .005/0.XX \pm 0.13			title 5P + 24S + 5P	
				angles	.XXX \pm .0020/0.XXX \pm 0.051			RIGHT ANGLE SOLDER HEADER	
				dr	T. BRUNGARD 12/01/03	INCH/MM		product family PwrBlade code 213	
				engr	M. GRAY 12/01/03			size dwg no 51939-097	
				chr	M. GRAY 12/01/03	scale 1:1		sheet 4 of 4	
				appd	M. GRAY 12/01/03				
sheet index	revision sheet								

cage code 22526

Pro/E

PDM: Rev:B

STATUS: Released

Printed: Aug 14, 2007